

Attachment A: HMP susceptibility map

Alameda Countywide
Clean Water Program
November 13, 2006

LEGEND (see text also)

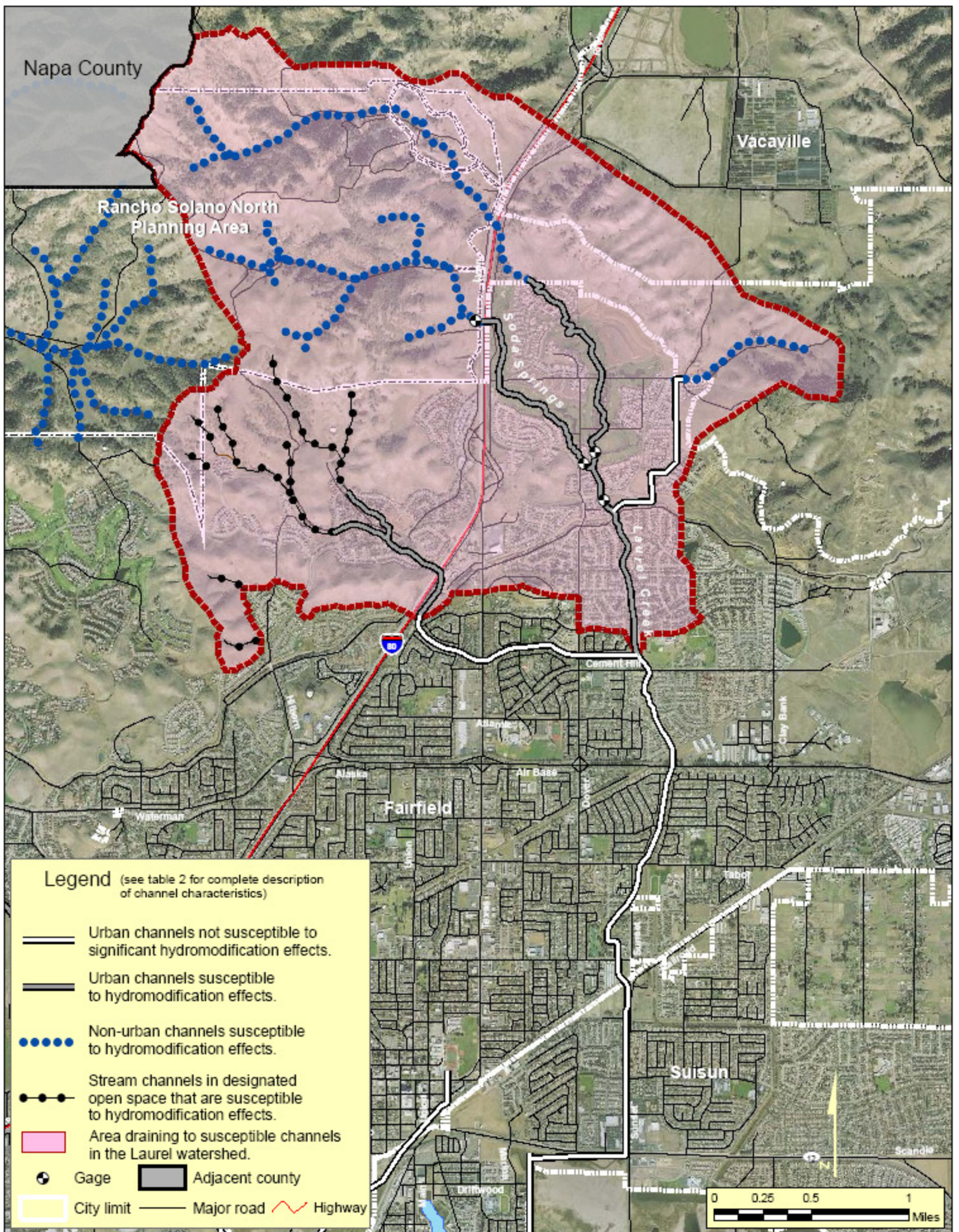
- Major highways
- Major watersheds
- County boundary
- Streets
- Channel type**
 - Natural creek or stream (susceptible)
 - Earthen channel or connector
 - Engineered channel - materials unknown
 - Engineered channel - concrete
 - Enclosed pipe or culvert
- Special consideration - San Lorenzo & Alameda Creeks
- Special consideration - Codornices Creek
- Hill or high slope region (susceptible)
- Tidally influenced / depositional - exempt
- Not included in HMP

Data sources:
Alameda County Flood Control and Water Conservation District; ACCWP;
Zone 7 Water Agency; U.S. Census Bureau; U.S. Geological Survey;
William Lettis Associates (Oakland Museum creek and watershed mapping project);
Balance Hydrologics and EIP Associates (Proposed test of the approach for the
ACCWP HMM Preliminary Map, July 2003)

Alameda County
San Joaquin County

Alameda County
Santa Clara County

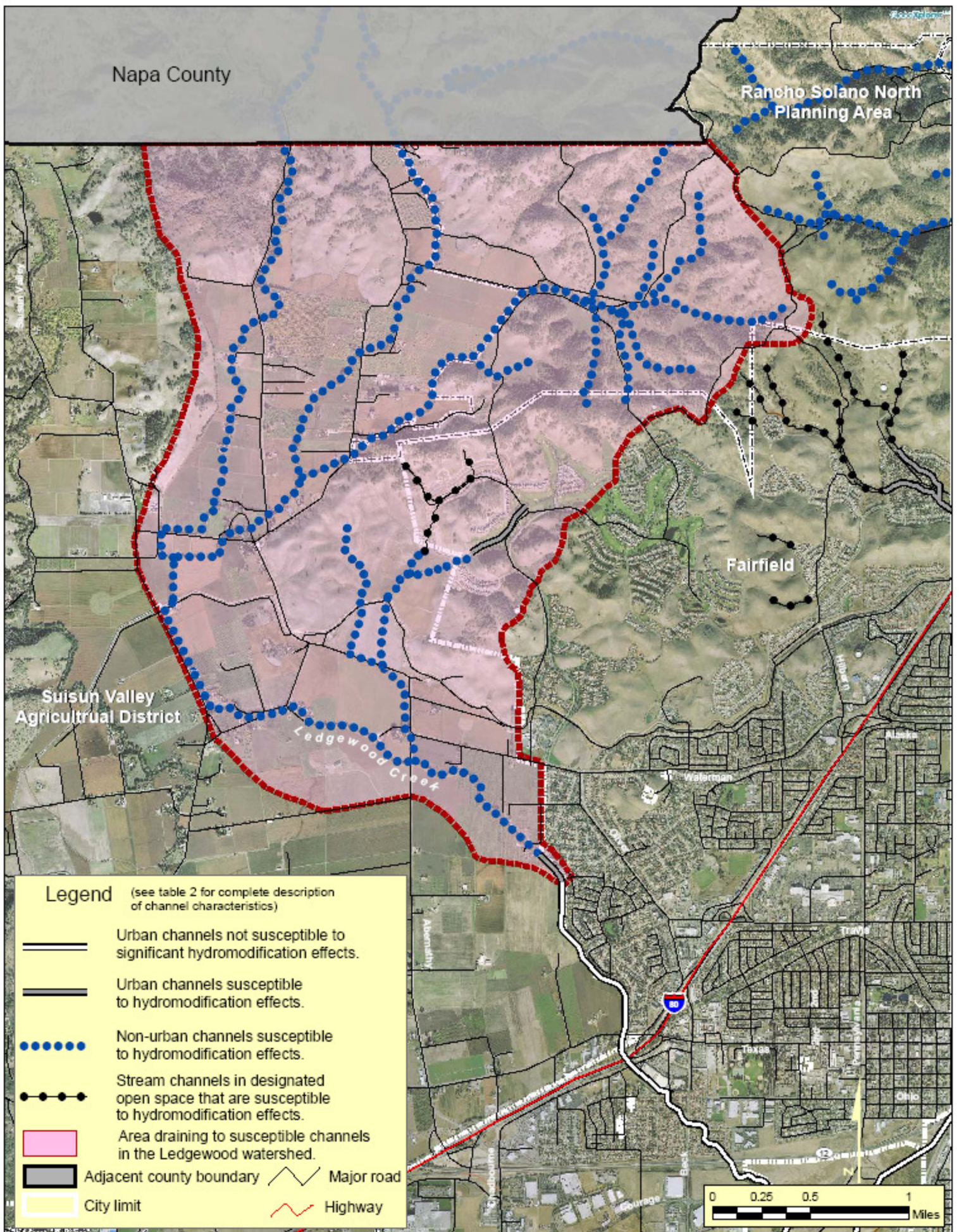
Alameda County
Santa Clara County



Source: Basemap data provided by Fairfield-Suisun Sewer District. Note that the roads layer does not include the most recently urbanized areas (north of Cement Hill Road, for example).



Figure 2. Map showing HMP channel Classification for the Laurel Creek watershed. The mid- to upper reaches include all channels within the watershed that are susceptible to hydromodification effects (dotted and gray-shaded channels on this map). Hydromodification controls are not required for projects that drain directly to non-susceptible urban channels.



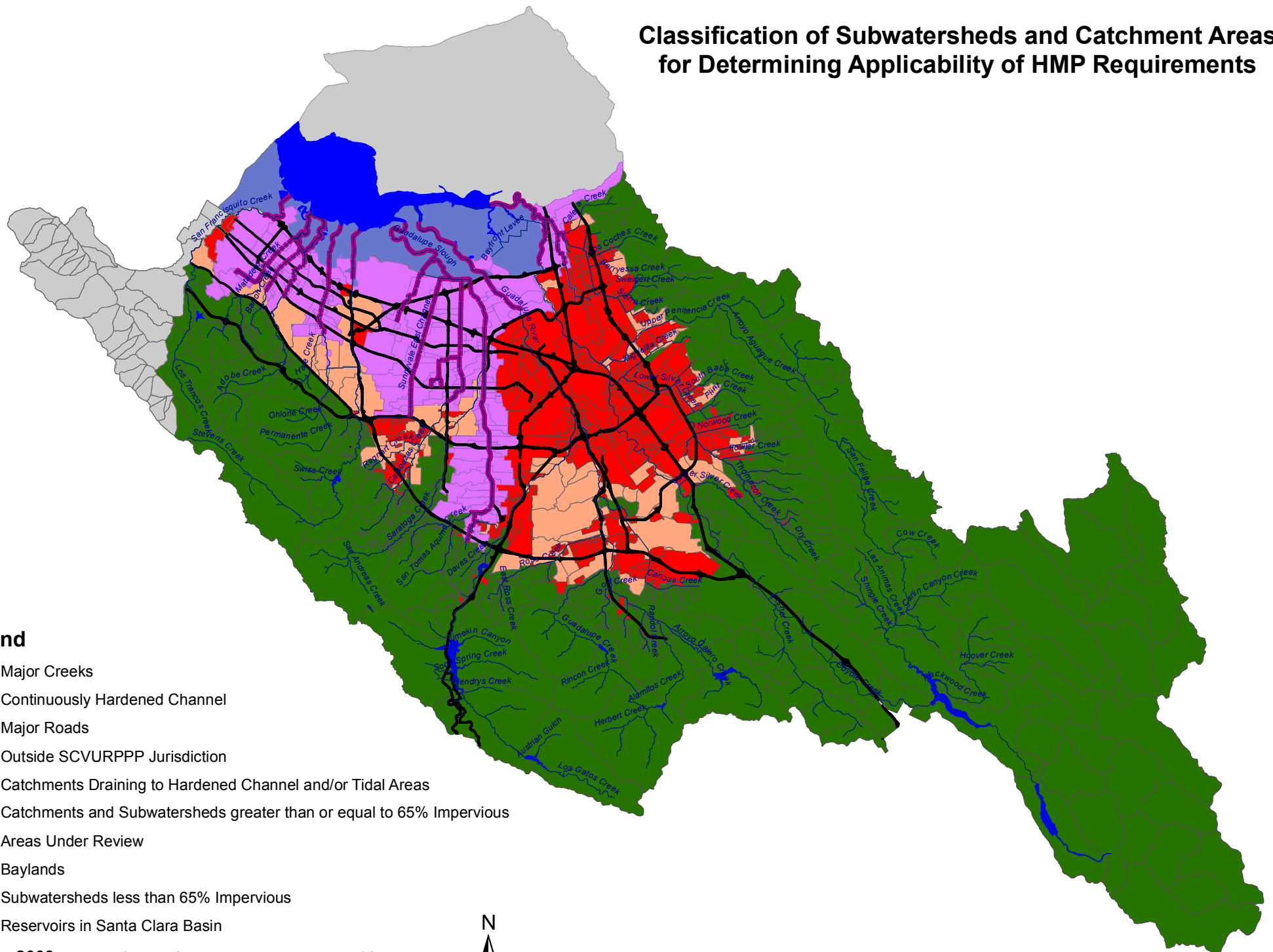
Basemap data provided by Fairfield-Suisun Sewer District. Note that the roads layer does not include the most recently urbanized areas, as shown in the aerial photo.



Figure 3. Map showing HMP channel Classification for the Ledgewood Creek watershed.

The mid- to upper reaches include all channels within the watershed that are susceptible to hydromodification effects (dotted and gray-shaded channels on this map), however areas outside the City of Fairfield are not included in this permit unless annexed by the city. The non-developed areas within the current city limits are designated open space in relatively steep terrain, and are unlikely to be converted to urban areas however the HMP still applies in these areas.

Classification of Subwatersheds and Catchment Areas for Determining Applicability of HMP Requirements



Legend

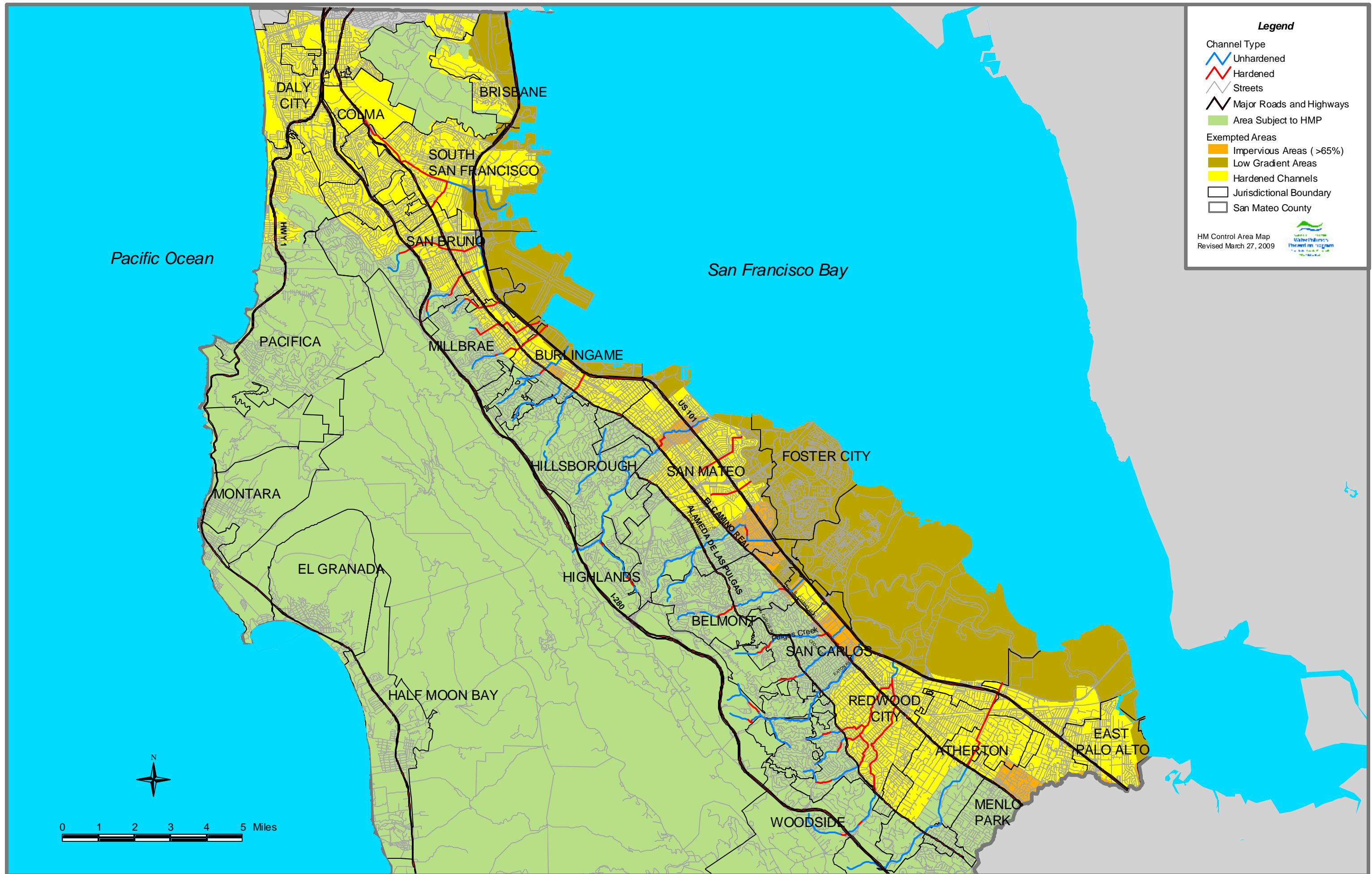
- Major Creeks
- Continuously Hardened Channel
- Major Roads
- Outside SCVURPPP Jurisdiction
- Catchments Draining to Hardened Channel and/or Tidal Areas
- Catchments and Subwatersheds greater than or equal to 65% Impervious
- Areas Under Review
- Baylands
- Subwatersheds less than 65% Impervious
- Reservoirs in Santa Clara Basin

March, 2009
SCVURPPP

0 2.5 5 10 Miles



This map contains: 1) a revision to the November 2007 version to correct a mapping error; and 2) two revisions to Areas Under Review in Palo Alto and North Santa Clara County to reflect updated impervious surface data, consistent with the HM applicability criteria set forth in Attachment F, Section 4 of the MRP



Pacific Ocean

San Francisco Bay

DALY CITY

COLMA

BRISBANE

SOUTH SAN FRANCISCO

SAN BRUNO

PACIFICA

MILLBRAE

BURLINGAME

MONTARA

HILLSBOROUGH

SAN MATEO

FOSTER CITY

EL GRANADA

HIGHLANDS

BELMONT

SAN CARLOS

HALF MOON BAY

REDWOOD CITY

ATHERTON

EAST PALO ALTO

WOODSIDE

MENLO PARK

0 1 2 3 4 5 Miles

